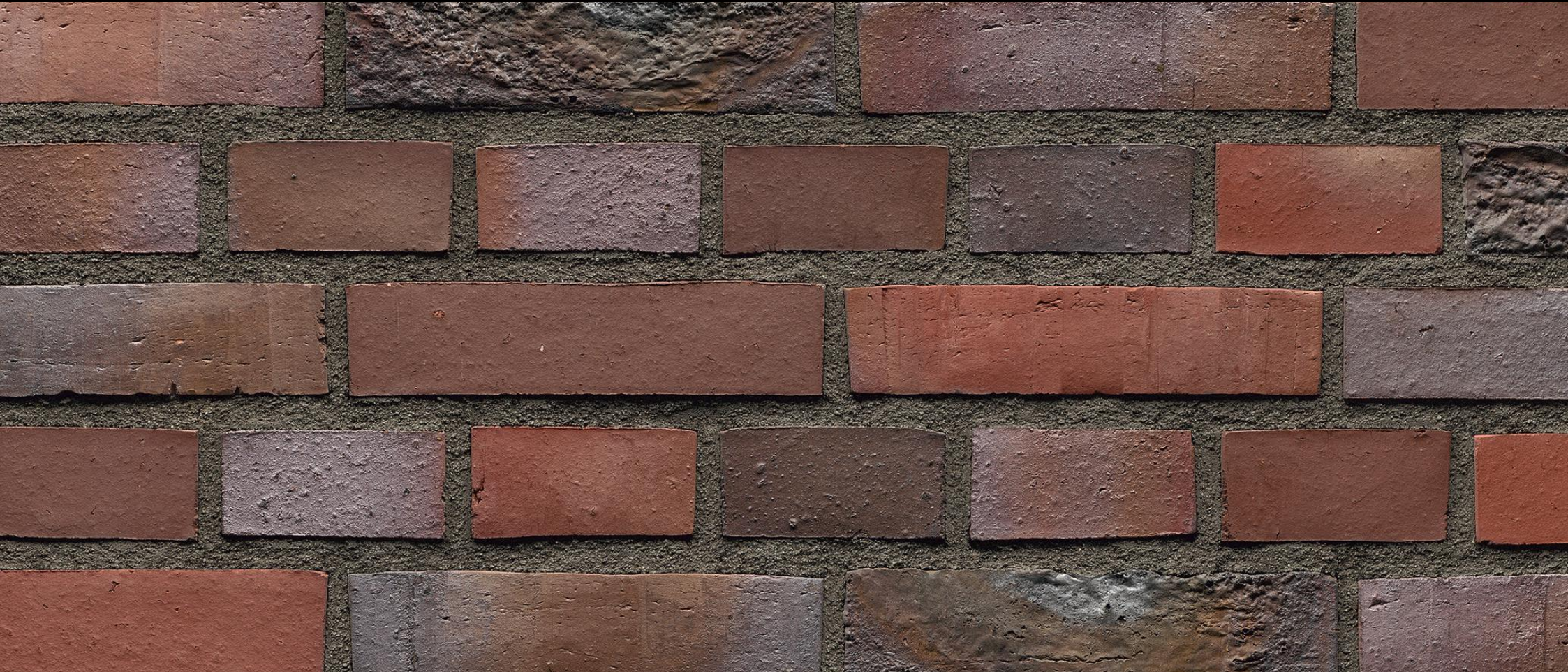
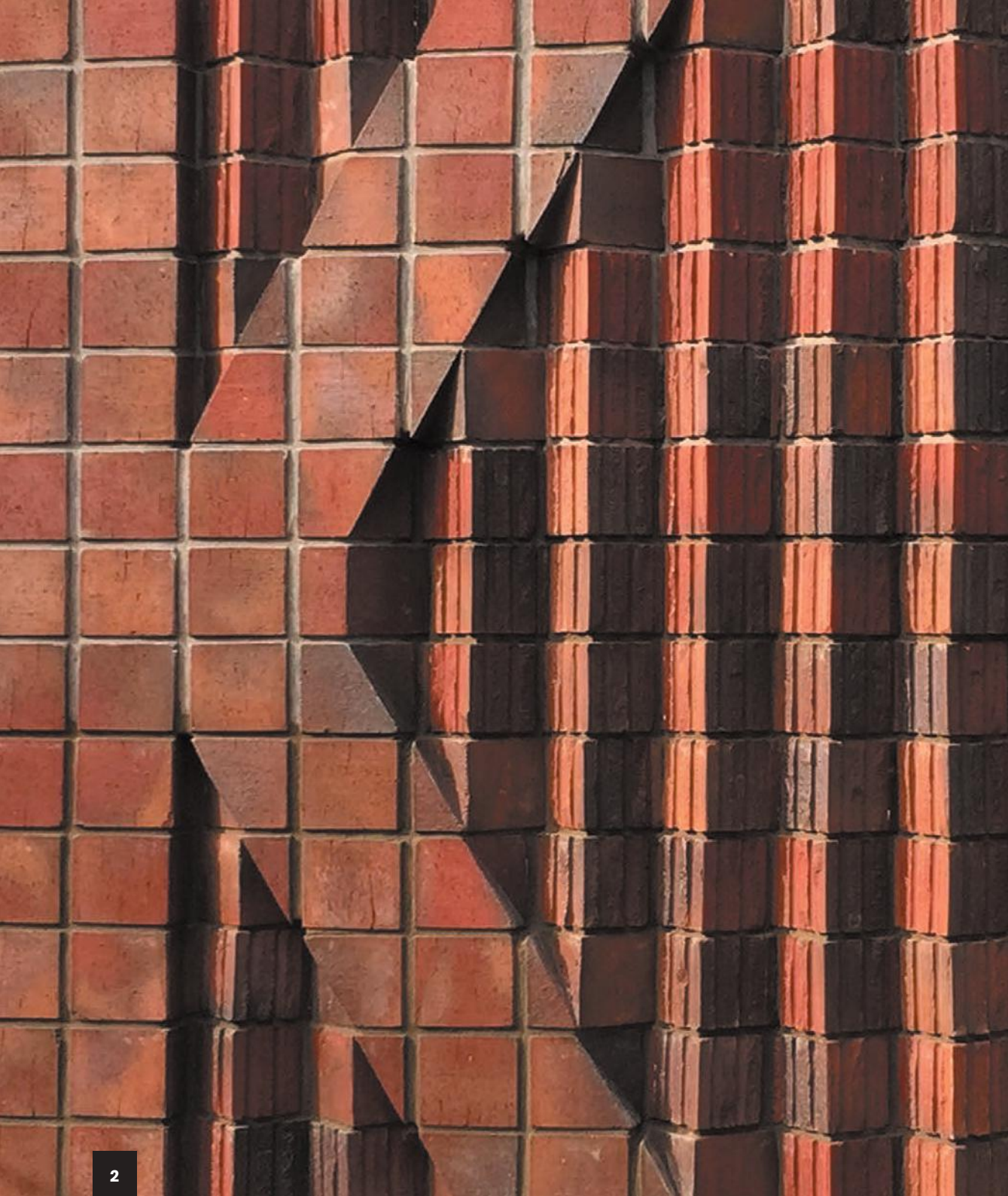


# D<sup>3</sup>EPPE

BACKSTEIN-KERAMIK



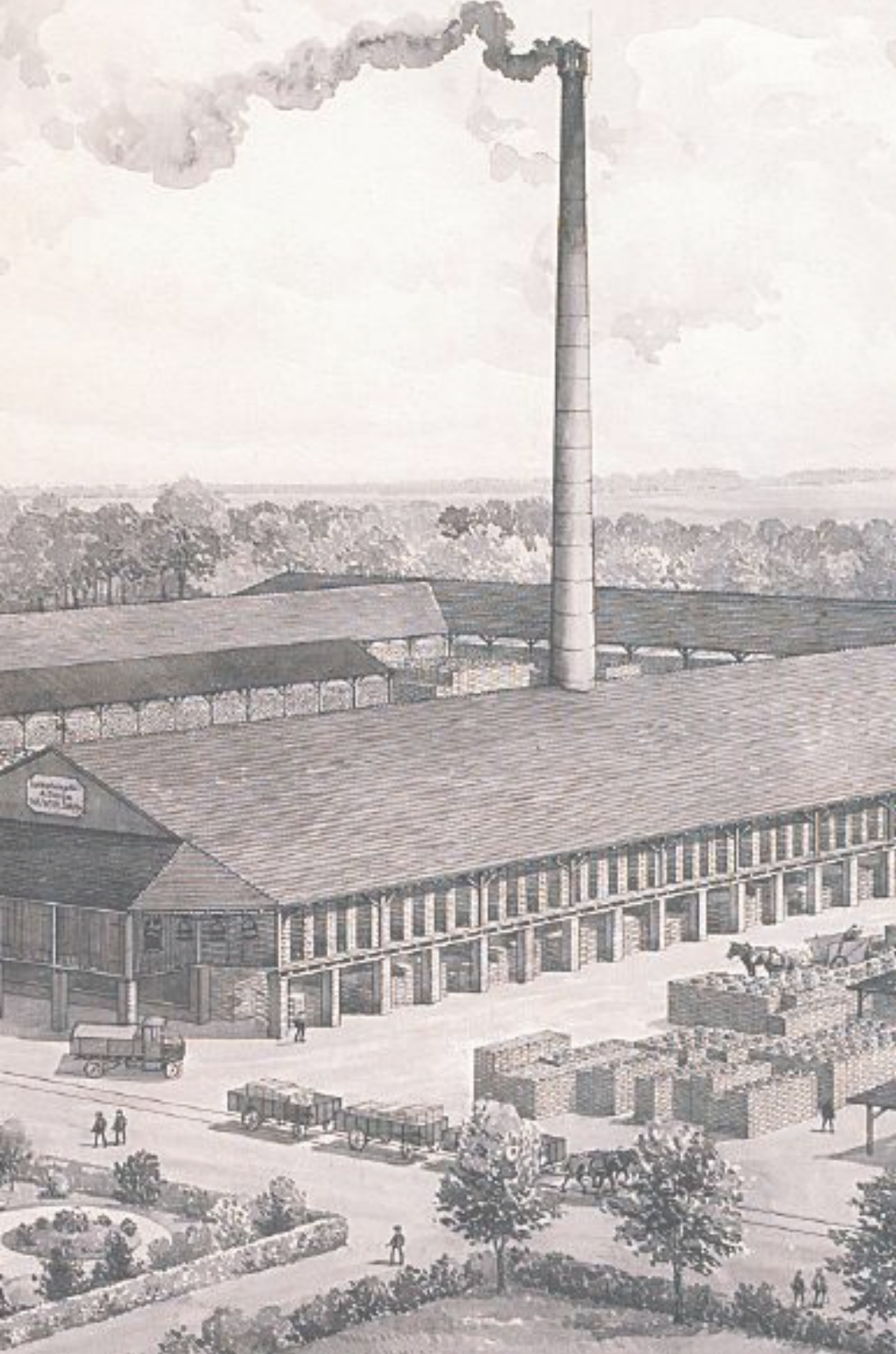




## CONTENTS

Introduction	3
Keyed Bricks	4
Dual Faced	6
Precast	7
Benefits	8
Standard Range	10
Case Studies	11
Technical Information	14
About Us	15





**We have partnered up with Deppe Backstein in Germany who since 1888, have been manufacturing a wide range of brick styles including Waterstruck, Extruded Wirecut & Machine Made Stock.**

Based in Uelsen in Northern Germany, Deppe are a family owned business and are very much aligned with EH Smith in their values.

One of the key reasons for partnering with the Deppe Family is we share the same enthusiasm to business & manufacturing as they do.

Deppe pride themselves on being different, they make unique brick colours, brick sizes & can produce a wide range of special bricks to suit any detail, for any project, in any brick!





# KEYED BRICKS







All of the EH Smith Deppe range have the option to have star like shape pressed into the frog of the brick also known as 'Keys'.

Once these bricks are cut in half this creates two equally sized brick slips from one parent brick with a precast key.

The design also integrates the brick headers which using the same cutting process can create two 'Keyed' brick headers from one parent brick.

# DUAL FACED

Dual Faced bricks have many benefits to the UK construction market. They are faced on both Brick stretchers and both Brick headers.

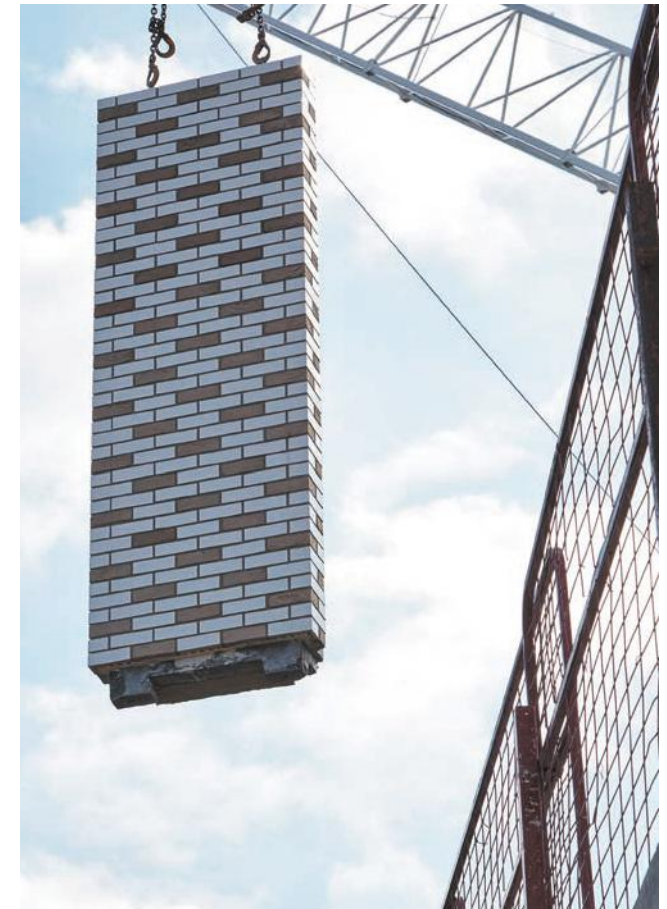
When using a Brick Façade System or a Precast / GRC pane system this brick style can be cut in half to produce Two Brick Slips from one parent brick offering a substantial cost & waste saving to your client.





# PRECAST

Brick-faced precast panels provide a great alternative to traditional construction methods.





The EH Smith Deppe brick range has many benefits. Having the ability to offer a Dual Faced brick with a preformed 'Key' is an added bonus to the Client, Specifier and Precast manufacturer.

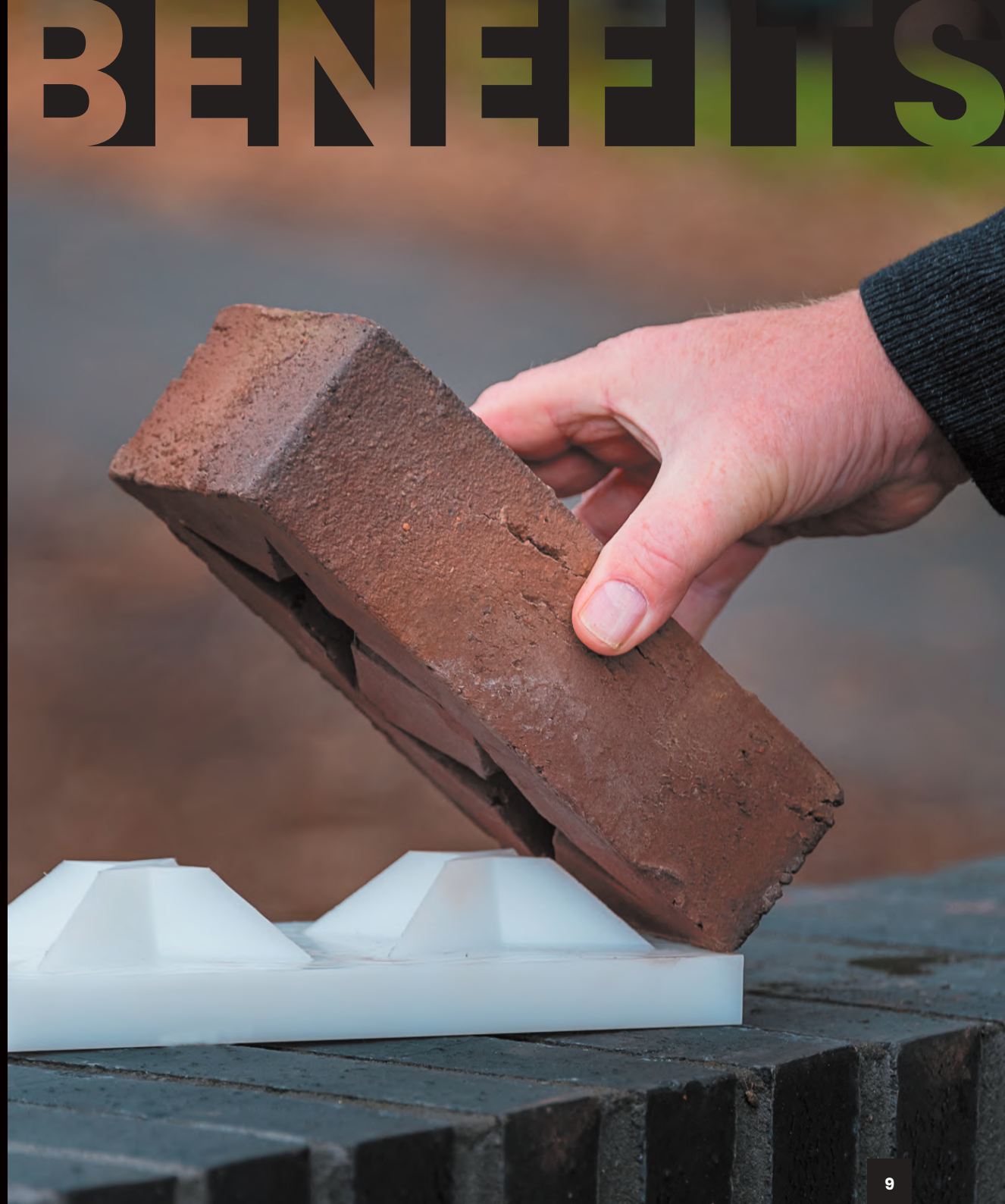
These exclusive Brick types offer a full range of colour and tones allowing the architect to create the perfect building, with the balance in efficiency that the range offer.





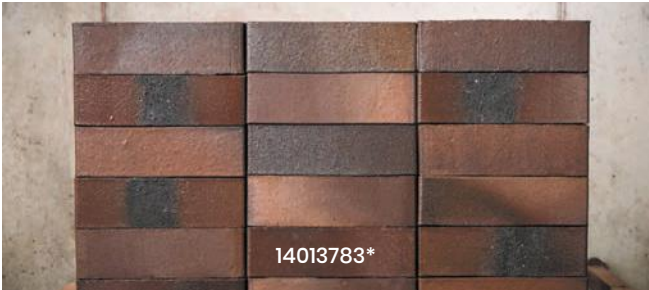
# BENEFITS

- Cost efficient
- Speed of construction
- Simplified logistics
- No scaffolding/external hoisting
- Reduction of wet trades on site
- Acoustic benefits
- Fire-resistant
- Reduction of waste





STANDARD RANGE



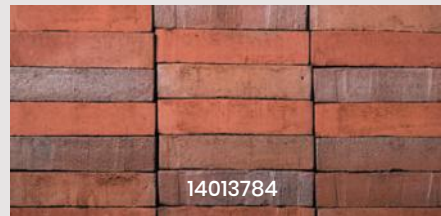
Other colours available. \*Single faced





## Schule, Baarle-Hertog

This Primary School based in a small town in Northern Belgium, has matched the old coal fired Red to Blue facings that are found in the centre of the town. The architect has decided to stack bond brickwork around the main entrances to create a slight different appearance in the brick to help navigate to these areas.



14013784



## The Anneliese Brost Musikforum, Bochum

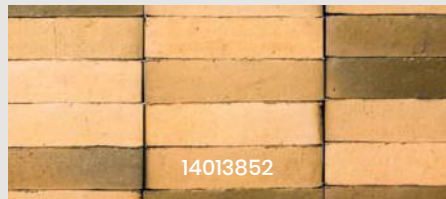
The Anneliese Brost Musikforum Ruhr in Bochum is a beacon for the arts across the entire region. The façade of the new building is provided by a linear module brick with white engobe added to the face of the brick. This allows the natural red tones seep through to complement the bricks of the adjacent church building.



14013780

## Wohnviertel Slot Van Terwijde, Utrecht

This 14-storey apartment building is located in the southeast corner of the Hof. The use of the yellow multi brick was chosen specifically on this project to bring the rest of the materials together. The dark elements in the blend are used to tie in the window colour to the rest of brick façade.



14013852



## Agnes-Hundoeegger-Weg, Hannover

The Apartment building Agnes-Hundoeegger-Weg is situated within a heterogeneous city block on a plot formerly used by a plant nursery, south of the city centre of Hannover. The traditional red tones of this brick characterise the heritage of buildings in this city. The large sections of projecting brickwork and rectangular shapes offers a modern twist to this conservation area.



14013782







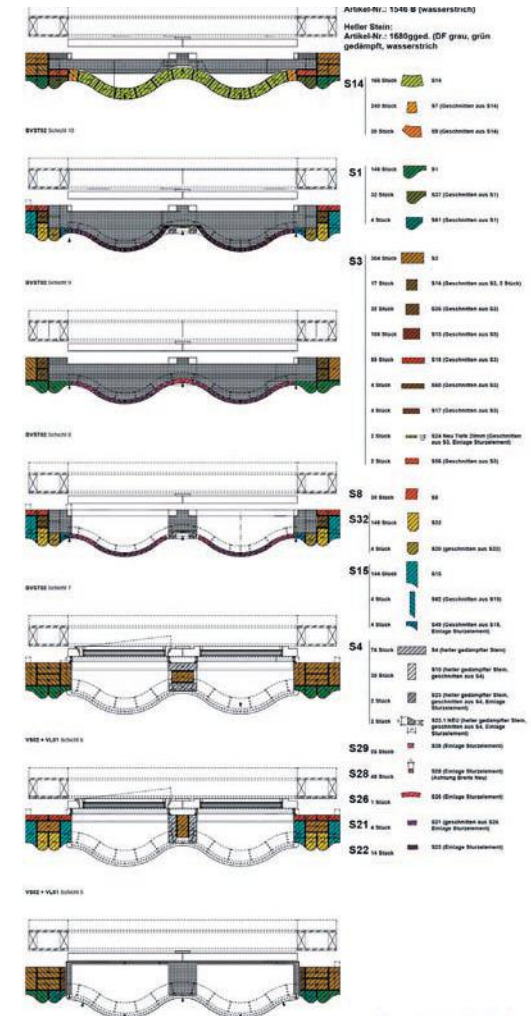
## Bremer Landesbank Building

Eschewing is the gridded façades that dominates the modern urban environment. Bremen's historic city centre has recently been graced with a new, modern bank building for Bremer Landesbank. Its brick façade makes a powerful statement whilst forging a clear link to the Hanseatic architectural tradition.

For the richly varied façade, which features a broad variety of curves, vertical and horizontal lines, columns and cornices, we developed and manufactured a custom brick including 65 different special shapes.

Designing the individual brick shapes so that they came together to give a uniform wave shape requires outstanding craftsmanship. Ensuring that the bricks precisely met the exact requirements placed on them meant actively engaging with close collaboration with the architects, Caruso St. John.

The hand-finished contours of the façade produces a depth and three-dimensionality which projects light, shadow and enormous vitality.



“

We were driven by the idea of producing exactly this result. The development and manufacturing process was an extraordinary experience, a challenge met with aplomb by all involved.

”

Dirk Deppe





## Textilverband, Munster

The design concept of the building for the Association of the Northwest German Textile and Garment Industry aims to provide all employees with a view of the picturesque landscape to the north and to welcome those arriving from the south with a strong textile image.

Behet Bondzio Lin Architekten employ six projecting special bricks which has an increasing gradient, creating a seemingly moving façade of light and shadow. The analogy to a light cloth over which the wind blows arises.

Deppe manufactured thousands of special shaped bricks which were calculated by parametric design software. Coupled with expert craftsmanship of the bricklayers, this effect is simply stunning!





## TECHNICAL

Product Code	Water Absorption	Compressive Strength (N/mm <sup>2</sup> )	Durability	Soluble Salts
14013779	<8%	> 19	F2	S2
14013780	<8%	> 19	F2	S2
14013781	<8%	> 19	F2	S2
14013782	<8%	> 19	F2	S2
14013783	<6%	> 44	F2	S2
14013784	<8%	> 19	F2	S2
14013785	<6%	> 44	F2	S2
14013786	<8%	> 19	F2	S2
14013787	<8%	> 19	F2	S2
14013788	<8%	> 19	F2	S2

## THE CONFIGURATION



Front



50/50 Front & Back



Back

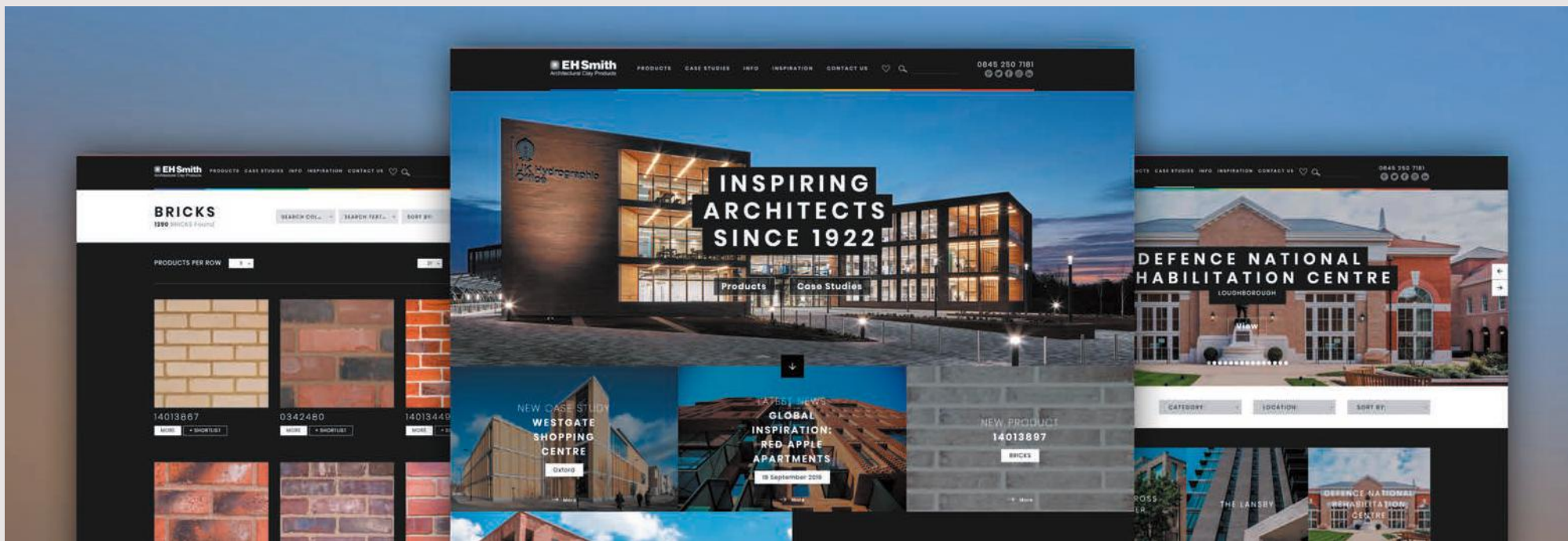
The front and rear side of the brick have different textures which are created during the manufacturing process. This makes it possible to increase or decrease certain natural colours, obtained whilst firing, by turning them forwards or backwards within the brickwork.

### SIZES

215 x 102 x 65mm  
210 x 100 x 50mm  
228 x 108 x 54mm  
240 x 115 x 52mm

OTHER COLOURS AVAILABLE





## About us

**Established in Birmingham in 1922, EH Smith has now grown to become one of the largest independent, privately owned, Builders Merchants in the UK with 12 trading locations throughout Midlands and South East.**

Since 1922 the company have explored more diverse markets and branched out to form a specialist division for Architectural Clay Products (ACP).

The ACP team work in close conjunction with Architects, Designers, Developers and Manufacturers and have been involved in projects that

have gained recognition through various prestigious awards.

Brick distribution is the cornerstone of EH Smith and with more than 95 years of experience this has enabled us to provide a unique range of bricks, sourcing products from the UK & Europe. Well known within the construction industry for our wide range of quality products and services, including our ability to source specialist materials and solutions to the customer's needs.

Our experienced specifications team have developed their expertise to deliver the highest levels of

customer service in the industry This enables us to help customers select the appropriate material for any development. Coupled with unbiased advice of the highest integrity & technical application suggestions, ensures the best solution possible with products of the highest quality.

We strongly believe that the depth of our expertise and the strength of our relationships provide a powerful catalyst to the uncompromised decision-making and optimised product choice needed to inspire vision, allowing our clients to create iconic construction projects with a proud legacy.







**Southern Office**  
38-42 St Johns Street  
Clerkenwell  
London  
EC1M 4DL

0845 250 7181

**Midlands Office**  
Ash House  
60 Halesowen Road  
Lydiate Ash  
B61 0QL

0121 713 7225

[clayproducts@ehsmith.co.uk](mailto:clayproducts@ehsmith.co.uk)

[ehsmithclayproducts.co.uk](http://ehsmithclayproducts.co.uk)

**D PPE**  
BACKSTEIN - KERAMIK